



# DUSP19 Polyclonal Antibody

<b>Catalog No</b>	YP-Ab-14733
<b>Isotype</b>	IgG
<b>Reactivity</b>	Human;Monkey
<b>Applications</b>	WB;IF;ELISA
<b>Gene Name</b>	DUSP19
<b>Protein Name</b>	Dual specificity protein phosphatase 19
<b>Immunogen</b>	The antiserum was produced against synthesized peptide derived from human DUSP19. AA range:111-160
<b>Specificity</b>	DUSP19 Polyclonal Antibody detects endogenous levels of DUSP19 protein.
<b>Formulation</b>	Liquid in PBS containing 50% glycerol, 0.5% BSA and 0.02% sodium azide.
<b>Source</b>	Polyclonal, Rabbit,IgG
<b>Purification</b>	The antibody was affinity-purified from rabbit antiserum by affinity-chromatography using epitope-specific immunogen.
<b>Dilution</b>	Western Blot: 1/500 - 1/2000. Immunofluorescence: 1/200 - 1/1000. ELISA: 1/20000. Not yet tested in other applications.
<b>Concentration</b>	1 mg/ml
<b>Purity</b>	≥90%
<b>Storage Stability</b>	-20°C/1 year
<b>Synonyms</b>	DUSP19; DUSP17; LMWDSP3; SKRP1; Dual specificity protein phosphatase 19; Dual specificity phosphatase TS-DSP1; Low molecular weight dual specificity phosphatase 3; LMW-DSP3; Protein phosphatase SKRP1; Stress-activated protein kinase pathway
<b>Observed Band</b>	28kD
<b>Cell Pathway</b>	
<b>Tissue Specificity</b>	Expressed in the heart, lung, liver, and pancreas. The expression level in the pancreas is the highest.
<b>Function</b>	catalytic activity:A phosphoprotein + H(2)O = a protein + phosphate.,catalytic activity:Protein tyrosine phosphate + H(2)O = protein tyrosine + phosphate.,function:Has a dual specificity toward Ser/Thr and Tyr-containing proteins.,similarity:Belongs to the protein-tyrosine phosphatase family. Non-receptor class dual specificity subfamily.,similarity:Contains 1 tyrosine-protein phosphatase domain.,tissue specificity:Expressed in the heart, lung, liver, and pancreas. The expression level in the pancreas is the highest.,
<b>Background</b>	dual specificity phosphatase 19(DUSP19) Homo sapiens Dual-specificity phosphatases (DUSPs) constitute a large heterogeneous subgroup of the type I cysteine-based protein-tyrosine phosphatase superfamily. DUSPs are



characterized by their ability to dephosphorylate both tyrosine and serine/threonine residues. They have been implicated as major modulators of critical signaling pathways. DUSP19 contains a variation of the consensus DUSP C-terminal catalytic domain, with the last serine residue replaced by alanine, and lacks the N-terminal CH2 domain found in the MKP (mitogen-activated protein kinase phosphatase) class of DUSPs (see MIM 600714) (summary by Patterson et al., 2009 [PubMed 19228121]).[supplied by OMIM, Dec 2009],

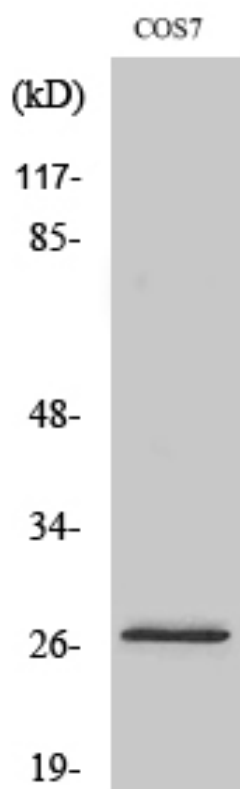
**matters needing attention**

Avoid repeated freezing and thawing!

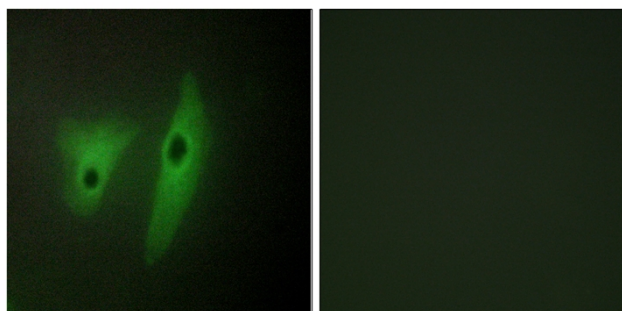
**Usage suggestions**

This product can be used in immunological reaction related experiments. For more information, please consult technical personnel.

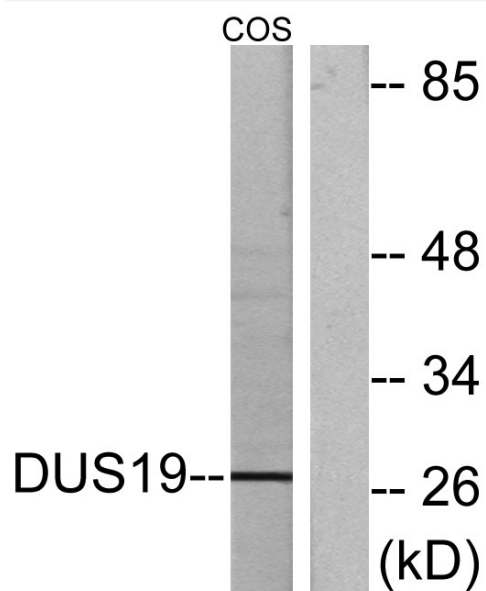
## Products Images



Western Blot analysis of various cells using DUSP19 Polyclonal Antibody



Immunofluorescence analysis of HeLa cells, using DUSP19 Antibody. The picture on the right is blocked with the synthesized peptide.



Western blot analysis of lysates from COS7 cells, using DUSP19 Antibody. The lane on the right is blocked with the synthesized peptide.